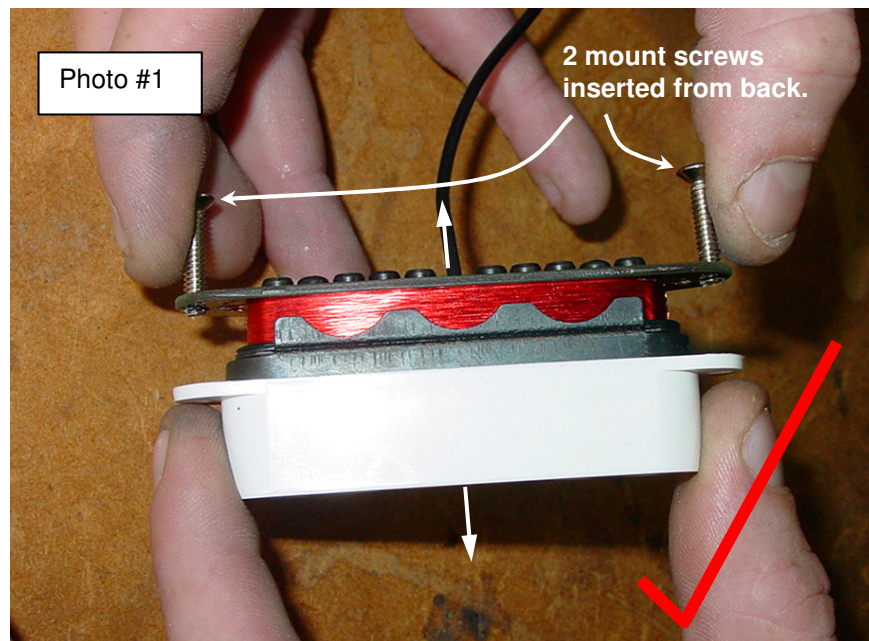


Changing covers on Kinman Hx pickups.

1-Sep-04

1 of 2 pages.

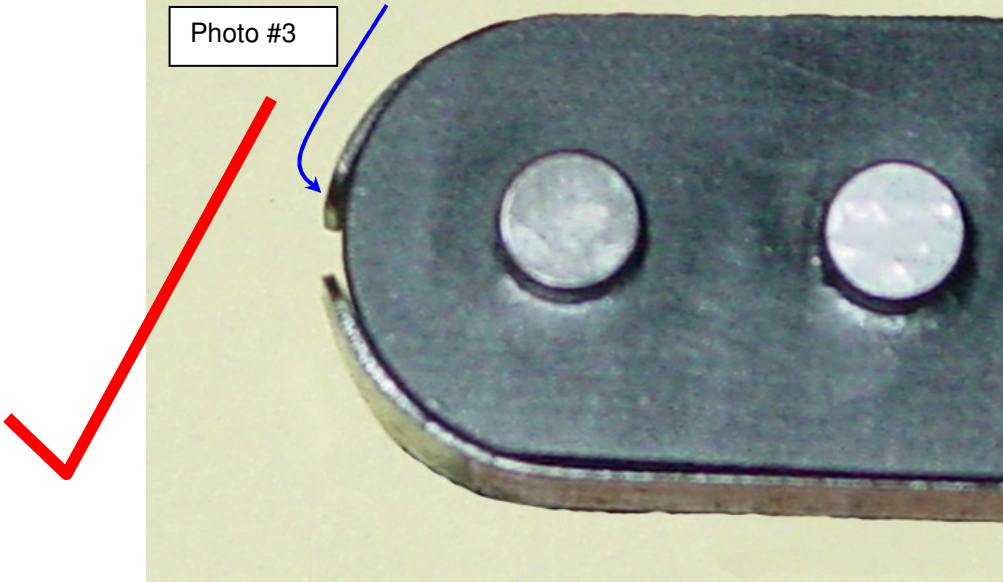
- 1) It is important to remove the cover correctly so as to avoid damaging the pickup.
- 2) Insert two mounting screws into the screw holes from the back of the pickup so they only protrude into the cover ears slightly.
- 3) Grab the screws between thumb and forefinger to secure the pickup.
- 4) Grab the cover between thumb and forefinger and gently and carefully wriggle the cover away from the pickup.
- 5) **IMPORTANT:** Keep the cover parallel to the pickup as in photo 1, do not let it *Skew* as in photo 2. Skewing is the major cause of damage to pickups.



Be careful not to disturb the factory set 'shield interference setting', as shown in photos 3 and 4.

Shield end wraps should protrude slightly from the bobbin cheek like this, so as to press lightly onto the inside of the cover.

Photo #3



Shield end wraps should NOT protrude too far from the bobbin cheek like this as it will damage the cover.

Photo #4

